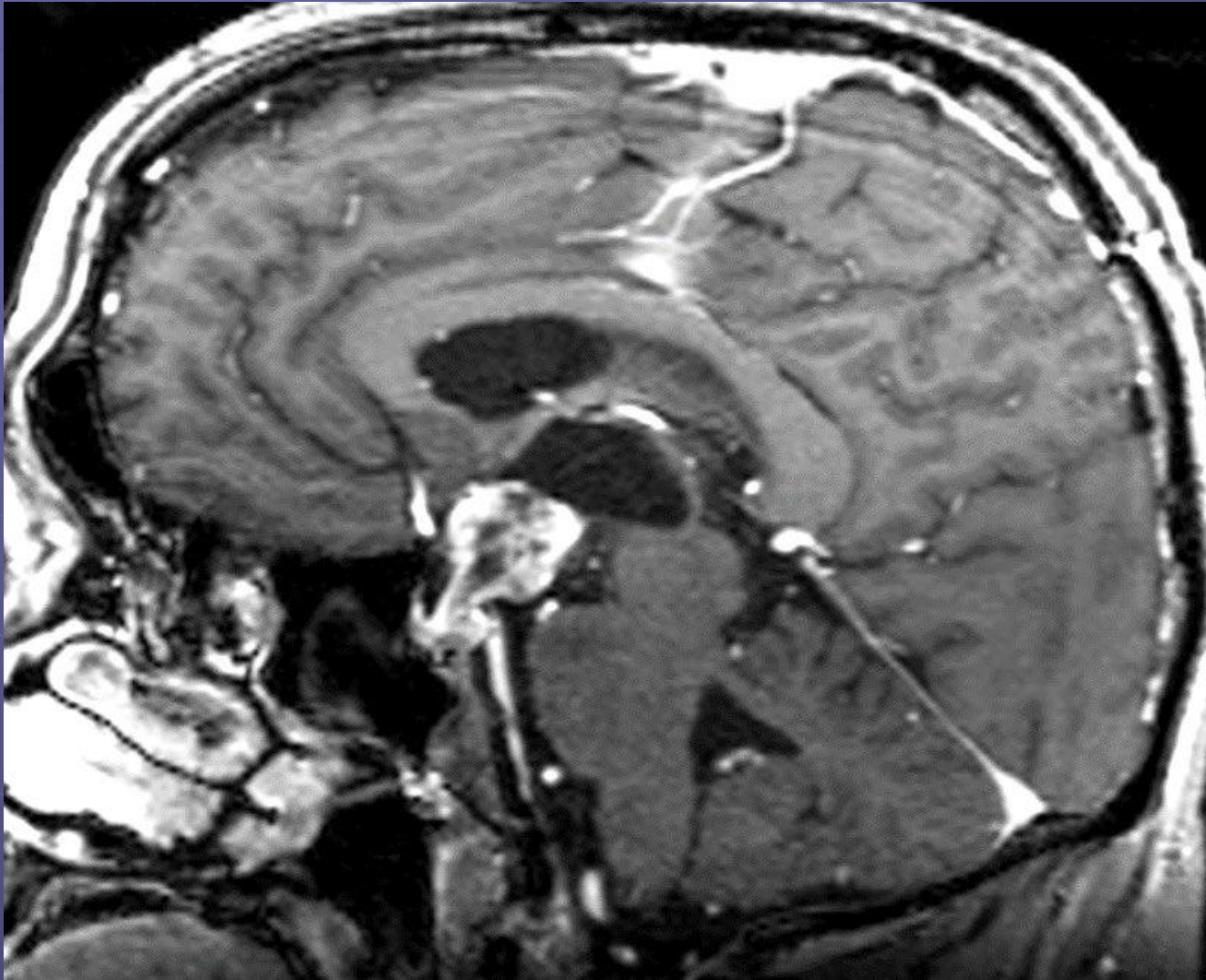
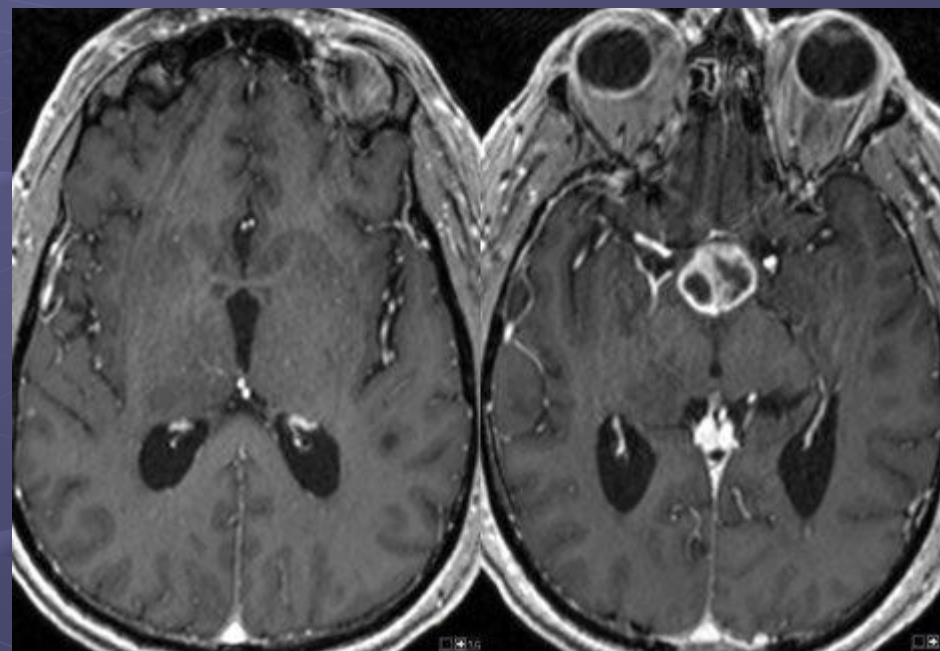
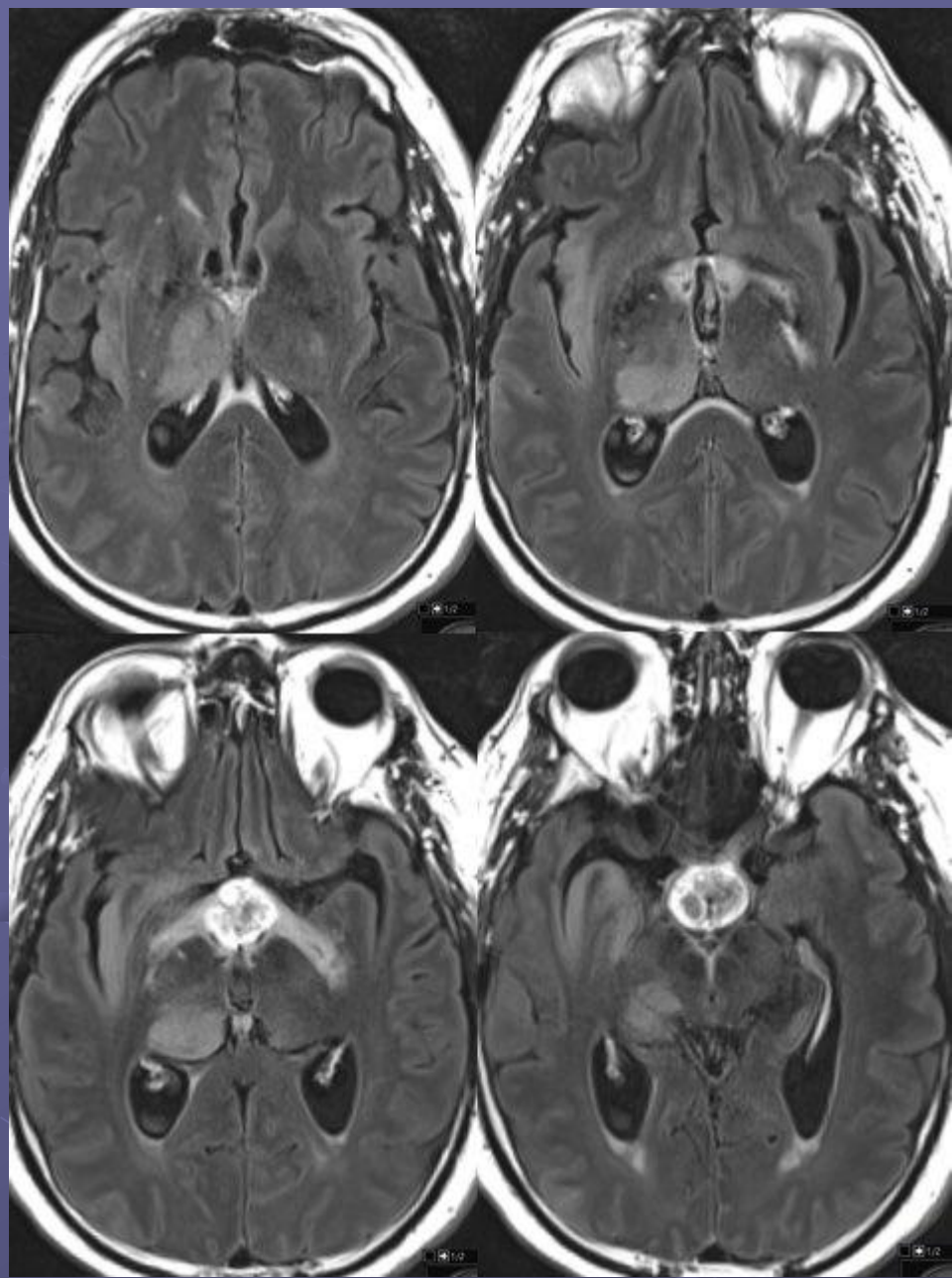


# Hypothalamic Glioblastoma





# Glioblastoma

- In isolation this mixed cystic and solid suprasellar mass looks a lot like a craniopharyngioma
- In isolation this mixed cystic and solid suprasellar mass looks a lot like a craniopharyngioma.
- An enlarged/expanded sella suggests an intrasellar lesion like a pituitary adenoma or Rathke Cleft Cyst
- 💡 Upward displacement of the chiasm suggests an intrasellar mass
- 💡 Hypothalamic masses displace the chiasm downward